

2 μ m



Mag = 18.36 K X

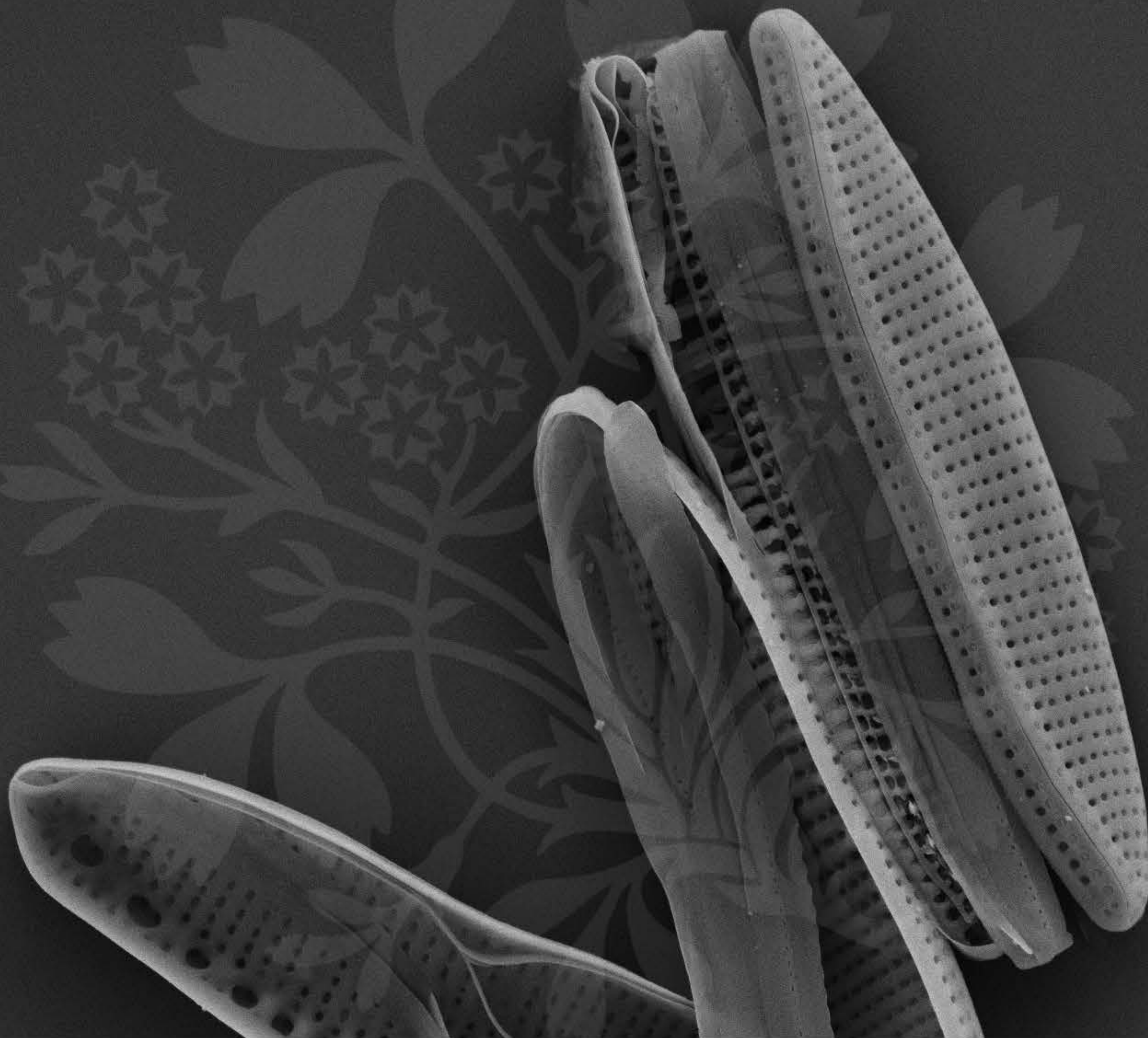
WD = 4 mm

EHT = 5.00 kV Signal A = SE2

File Name = 023-L58.tif

Date :8 Aug 2011





Mag = 11.66 K X

EHT = 5.00 kV Signal A = SE2

Date :8 Aug 2011

WD = 4 mm

File Name = 024-L58.tif

1 μ m
|
|

